

IMPORTANT DATES

Spring Semester, 2012

October 15, 2011~December 15, 2011
(No late applications will be processed)

Application Period for submitting application documents and paying fees

December 16, 2011 ~ December 31, 2011

Review and Evaluation

January 1, 2012

Admission Results Announcement and Mailing Notice of Admission

January 10, 2012

Admitted Students confirm their status to CCU

January 31, 2012

Pick-up Service Reservation

Early February 2012

Semester Begins, and Registration

Fall Semester, 2012

January 1, 2012~June 15, 2012
(No late applications will be processed)

Application Period for submitting application documents and paying fees

June 15, 2012 ~ June 24, 2012

Review and Evaluation

June 28, 2012

Admission Results Announcement and Mailing Notice of Admission

July 31, 2012

Admitted Students confirm their status to CCU

August 20, 2012

Pick-up Service Reservation

Early September 2012

Semester Begins, and Registration

It is strongly recommended to contact the office of International and Mainland China Affairs for latest information.

CONTACT INFORMATION

Questions about Application

International Affairs Division,
Office of International and Mainland China Affairs

Miss Monica Chiu

+886-2-28610511 ext.18105

qpj@ulive.pccu.edu.tw

CCU Information

http://www.pccu.edu.tw

55, Hwa-Kang Rd., Yang-Ming-Shan,
Taipei, Taiwan 11114, R.O.C.

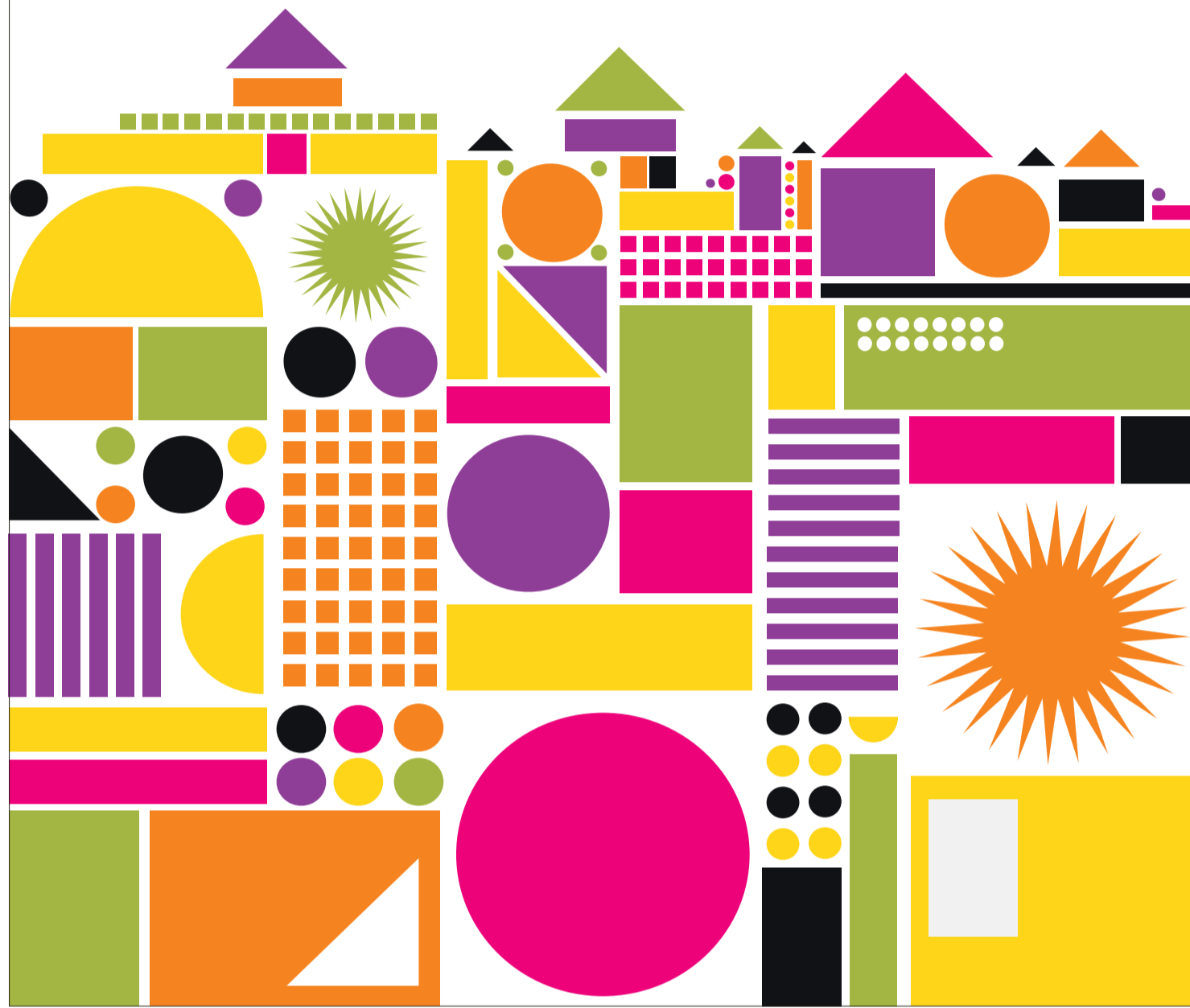
臺北市 11114 陽明山華崗路 55 號



2012

GRADUATE PROGRAMS FOR INTERNATIONAL STUDENTS

Chinese Culture University 中國文化大學



GRADUATE PROGRAMS FOR INTERNATIONAL STUDENTS

CCU has established a number of innovative and special departments that have met just in almost all disciplines. With such an advantage, in 2011, the university will launch 10 master degree programs to offer courses completely taught in English available for international students worldwide. The programs include disciplines in Business, Tourism Management, Banking and Finance, Journalism, Agricultural Biotechnology, Architecture and Urban Design, Digital Mechatronic Technology, English and American Literatures, Earth Sciences, and Sport Coaching Science. The majority of faculties in these programs hold an advanced degree from abroad. Therefore, they are capable of communicating with, and providing guidance for international students.

HOW TO APPLY

Applicants are requested to download "Admission form" and "Items of submission" from the admission page, [CCU website http://www.pccu.edu.tw](http://www.pccu.edu.tw) (Chinese version) or <http://www.pccu.edu.tw/intl/index-e.htm> (English version) and fill it in, and then send it with the required documents and the application fee receipt by **e-mail** to qpj@ulive.pccu.edu.tw

* Other required documents as specified by individual departments or graduate programs: Applicant must submit an "Admission form" with portfolio of fine art work, performance recording material or academic publication for reviewing between **October 15, 2011 and December 15, 2011(for Spring Semester) or January 1, 2012 and June 15, 2012(for Fall Semester)**, as attested by postal date stamp. Please indicate "International Student Application" on the envelope.

Mailing Address :

Office of International and Mainland China Affairs, Chinese Culture University
No.55, Hwa Kang Rd., Shilin Dist., Taipei City 11114, Taiwan (R.O.C.)



LIFE AT CCU

Housing

1 On-Campus Housing

Male international students are assigned to Ta-Chung and Ta-Lun dorm; female international students are assigned to Ta-Ya dorm. If you need on-campus housing upon arrival at CCU, please check with the corresponding dorm for availability.

2 Off-Campus Housing

If you prefer to live off-campus, please visit the Hwa-Kang Living Web at <http://living.pccu.edu.tw> for more information. If you have any questions regarding student housing, please contact the Center for International Exchange at +886-2-2861-0511, ext.18203, International Student Section.

Health Insurance

According to Taiwanese government regulations, international students are required to have valid health insurance during their stay in Taiwan. Alien residents who possess Alien Resident Certificates and have lived in Taiwan for more than four months are required to join Taiwan's National Health Insurance. For detailed information please check with the Bureau of National Health Insurance .Toll Free Tel: 0800-030-598 Tel: 0800-030-598

SCHOLARSHIPS

- CCU grants various kinds of tuition scholarships for international students who are admitted into the program.
 - Chinese Culture University Scholarship will allow you to waive your total tuition and fees.
 - Assistantship is also available for international students who enroll into the programs as well.
- Taiwan Scholarships provided by four Taiwan government agencies are available; see <http://english.moe.gov.tw/ct.asp?xItem=10408&ctNode=10632&mp=1> for details.

APPLICATION FEES

Beneficiary's Name	CHINESE CULTURE UNIVERSITY		
Beneficiary's Address	No.55, Hua-Kang Rd., Yang-Ming-Shan, Taipei City 111, Taiwan (R.O.C.)		
Beneficiary's Bank Name	Taishin International Bank Business Department		
Beneficiary's Bank Address	1F., No.44, Sec. 2, Zhongshan N. Rd., Taipei City 104, Taiwan (R.O.C.)		
Beneficiary's Account No.	00110070155700 (14 Digits)		
Payment / Application fee	Bachelor	Master	PhD
USD	\$40	\$45	\$85

